

# Taburete

Sirenas

Measures 1-4 of the piece. The music is in 4/4 time with a key signature of one sharp (F#). The melody in the right hand features eighth and sixteenth notes, while the left hand provides a harmonic accompaniment with chords.

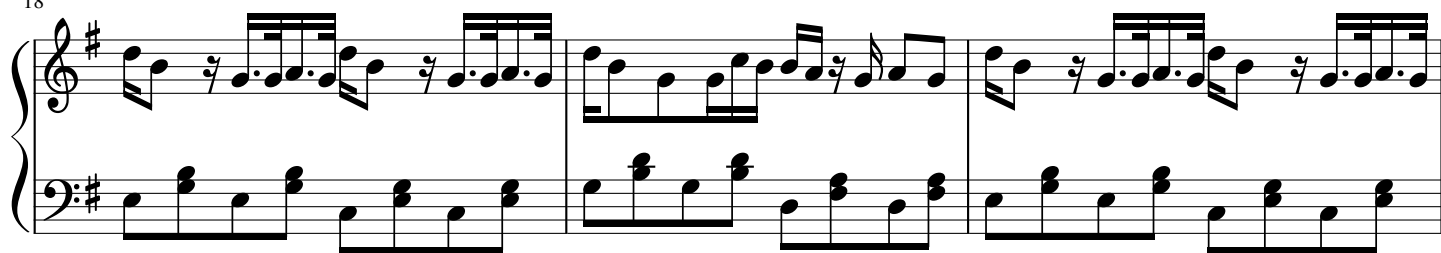
Measures 5-8 of the piece. The musical structure continues with the same melodic and harmonic patterns established in the first four measures.

Measures 9-11 of the piece. The melody becomes more active with sixteenth-note runs, and the bass line features a steady eighth-note accompaniment.

Measures 12-14 of the piece. The piece includes a brief key change to D major (two sharps) in measure 13, indicated by a key signature change. The musical texture remains consistent with the previous sections.

Measures 15-17 of the piece. The music returns to the key of F# major and continues with the established melodic and harmonic motifs.

18



21



24



27



30



33

