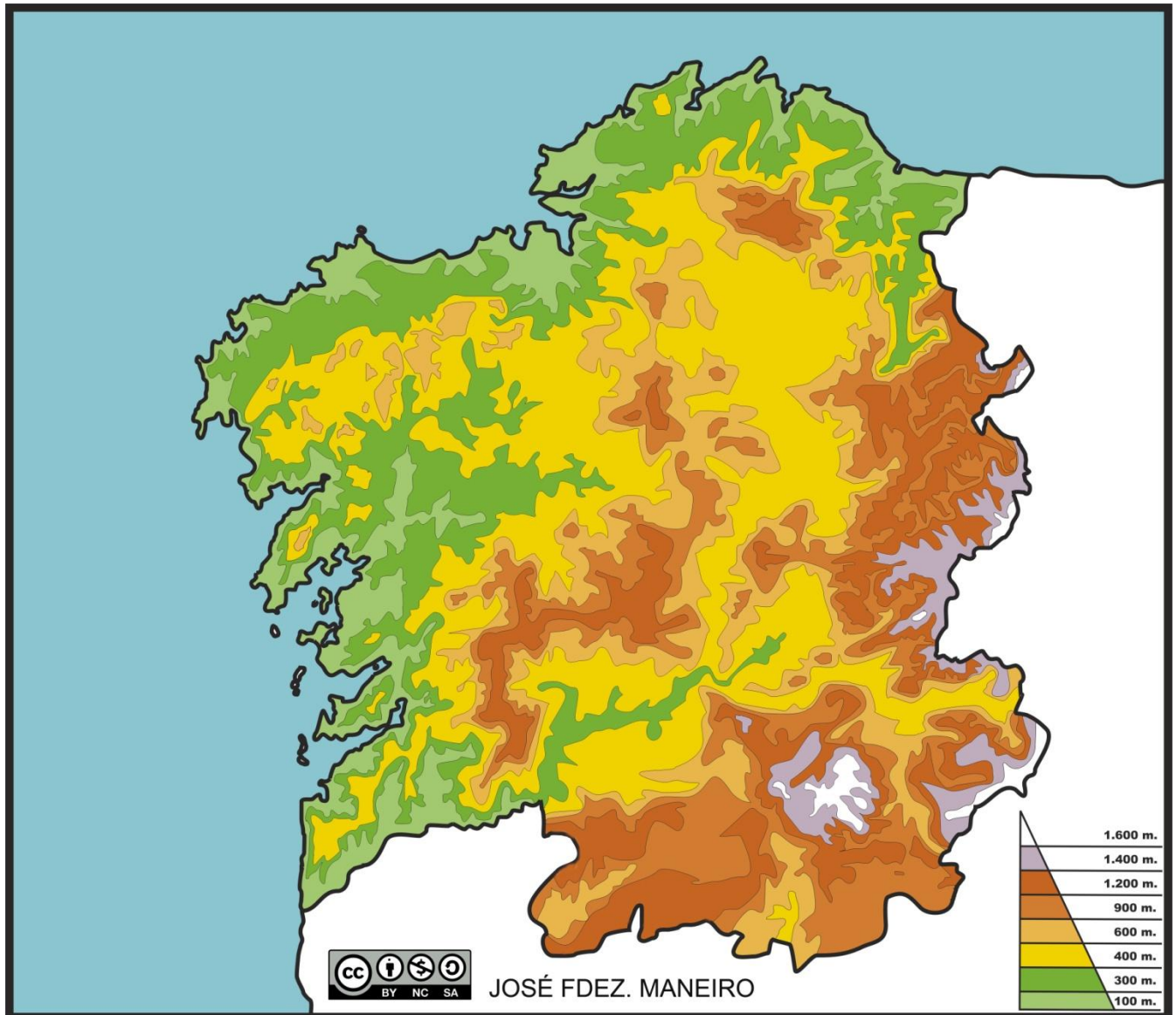
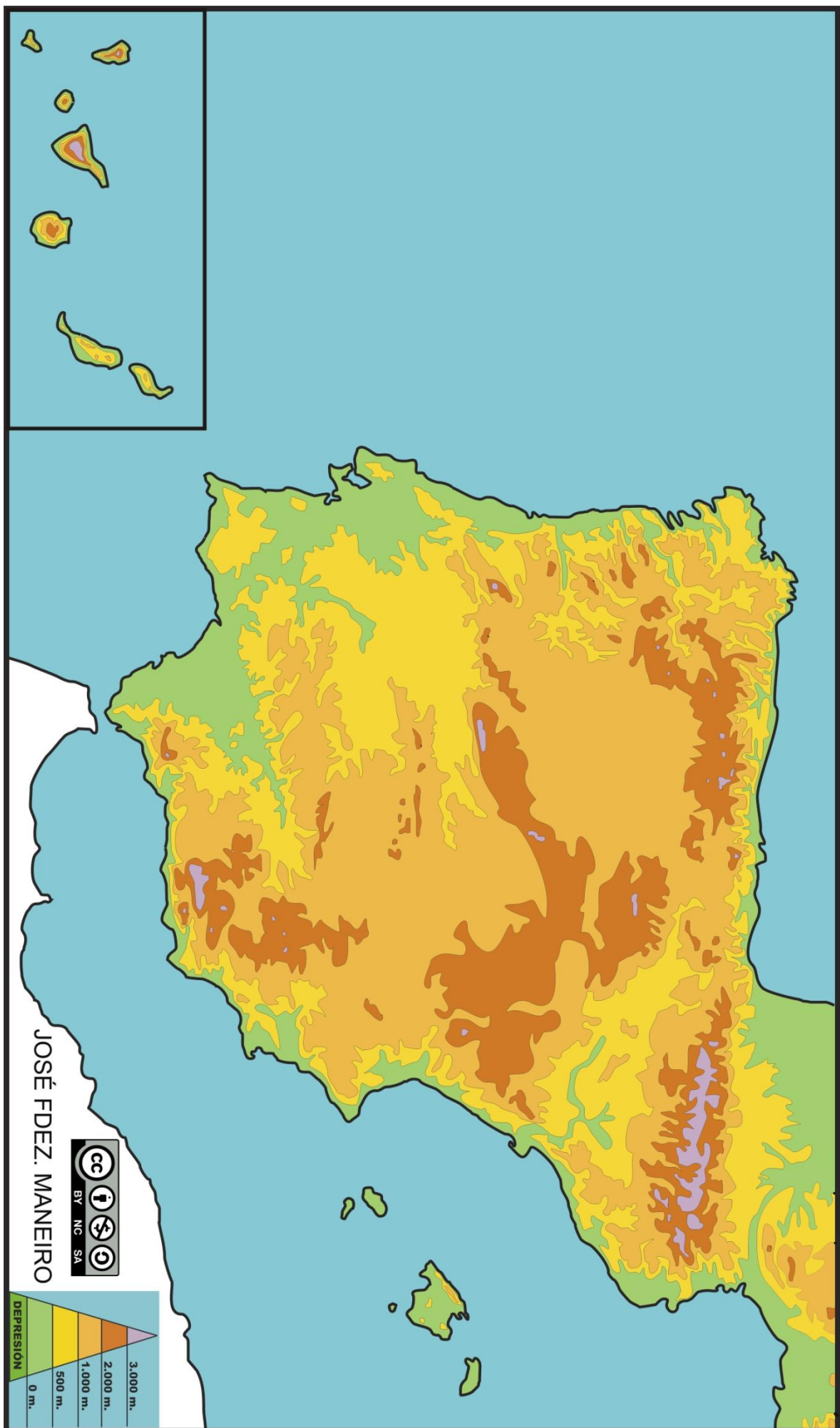


## ACTIVIDADES 2ª parte

Completa os seguintes mapas



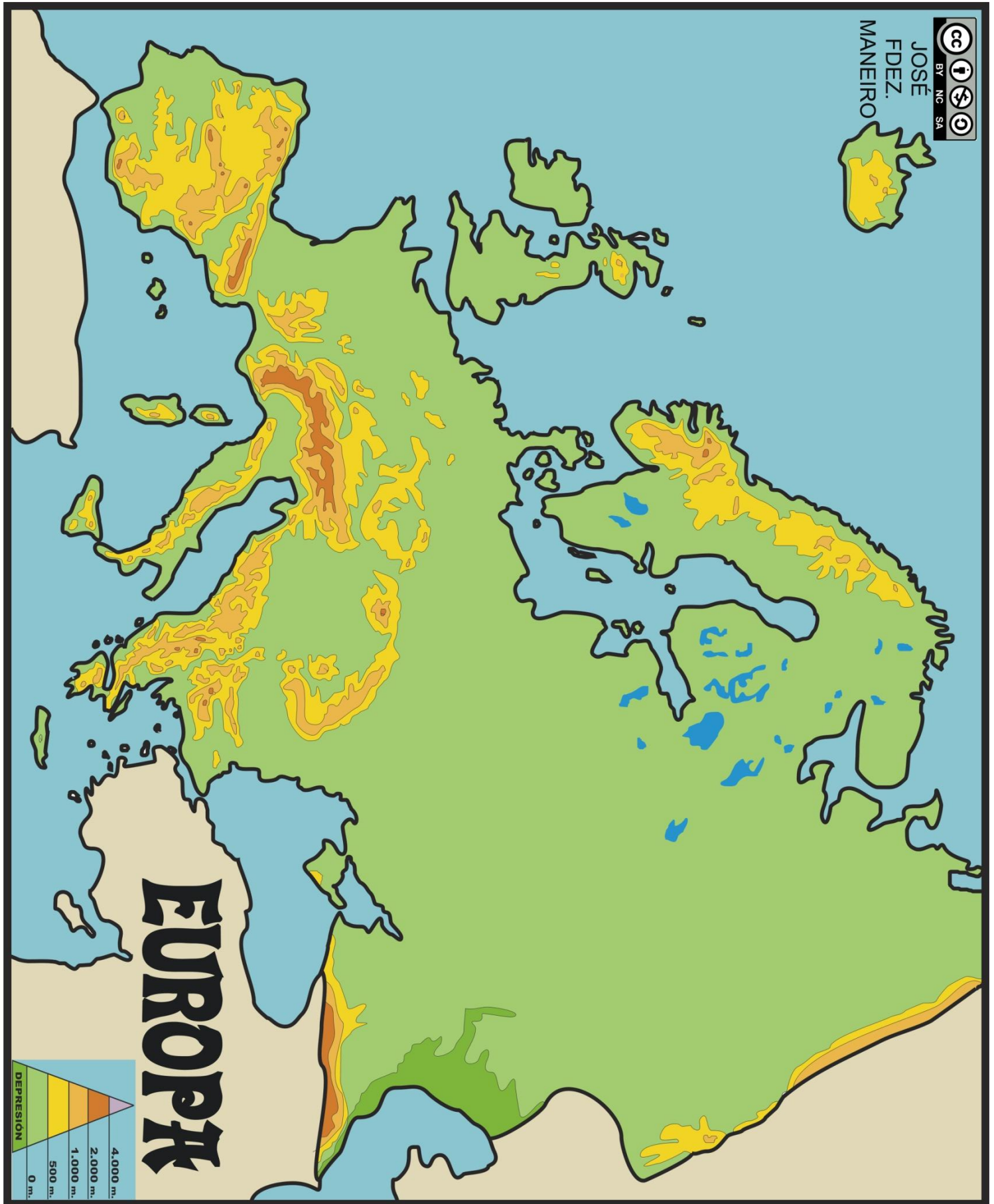




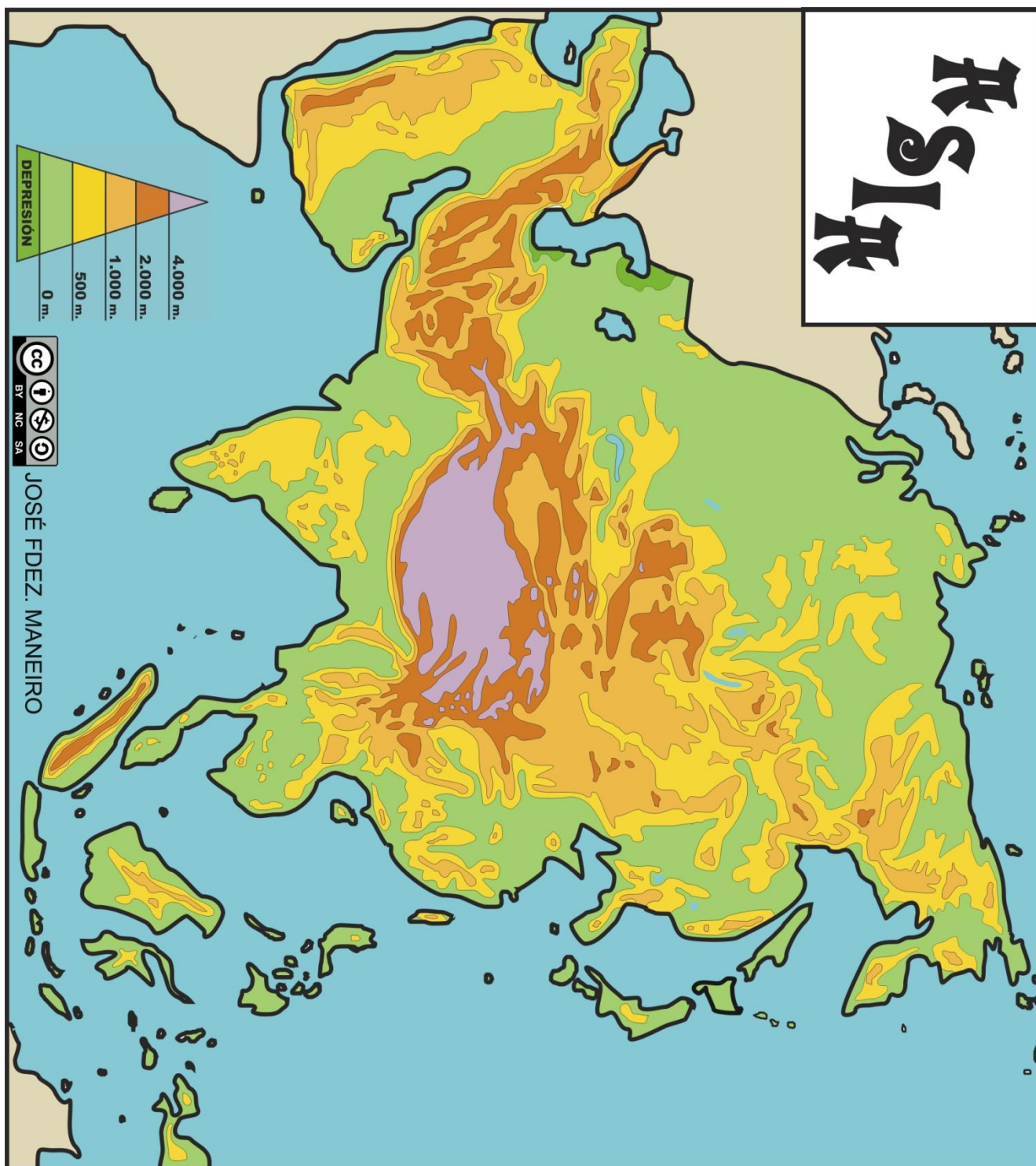
JOSÉ FDEZ. MANEIRO



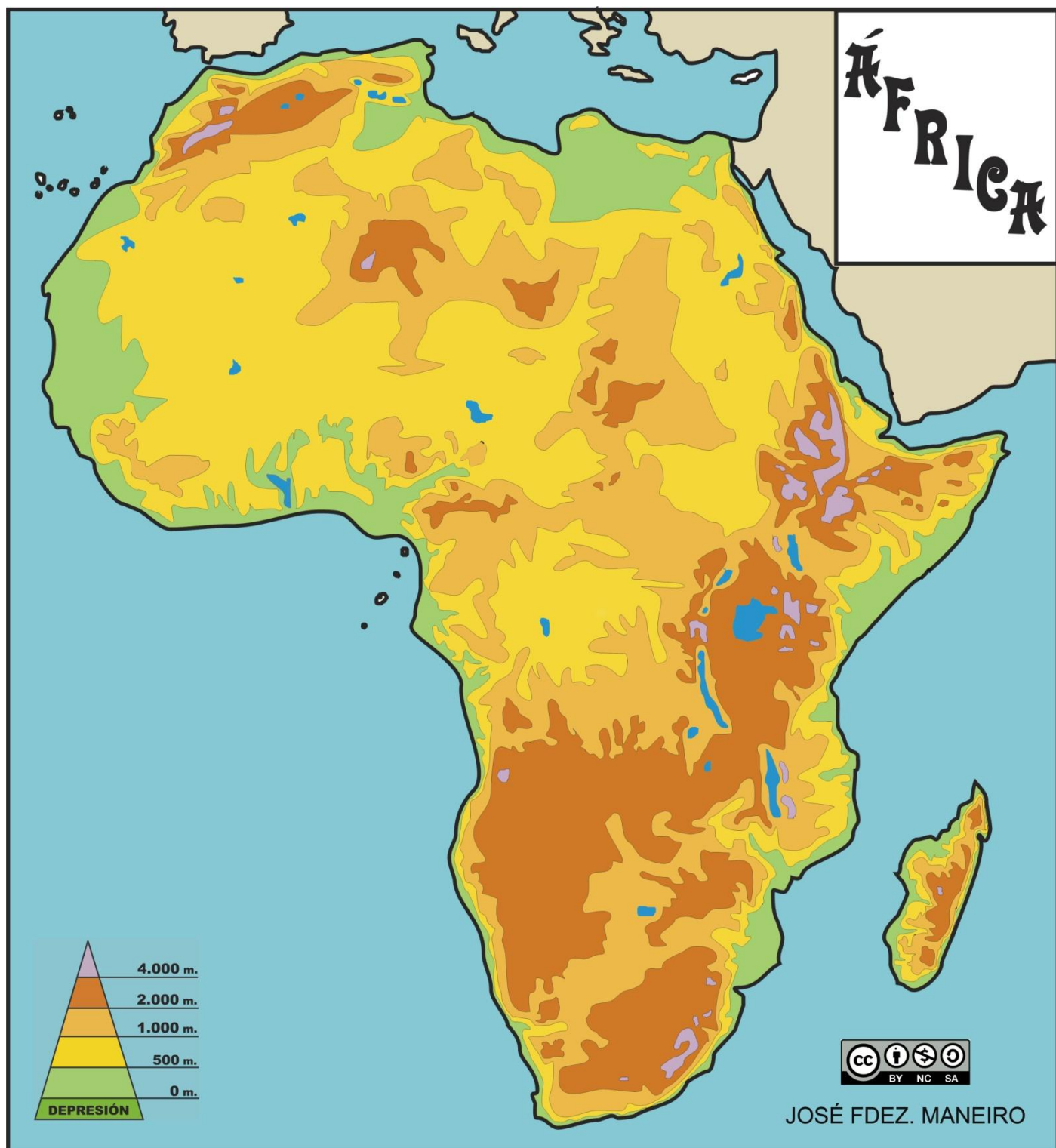


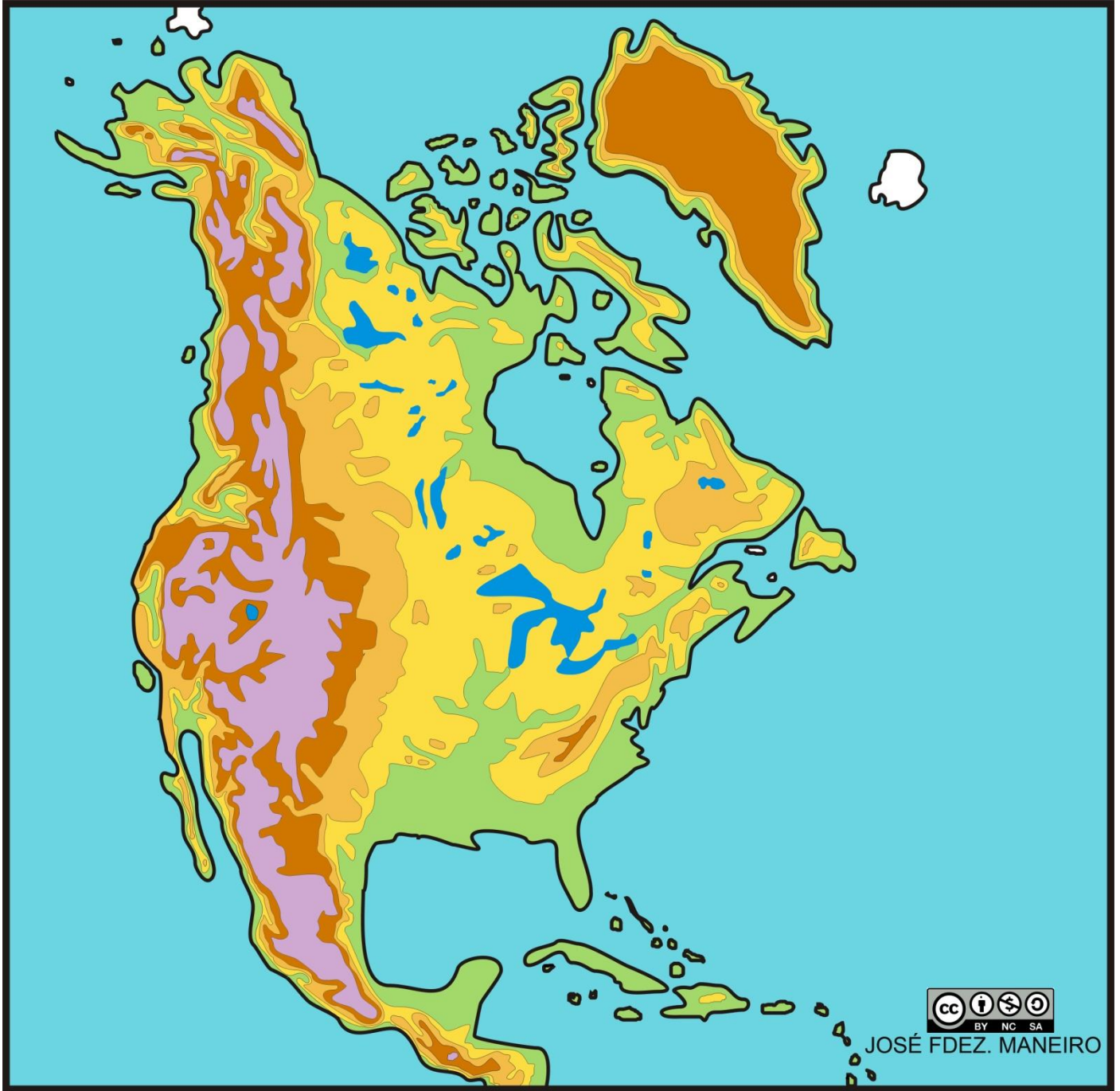


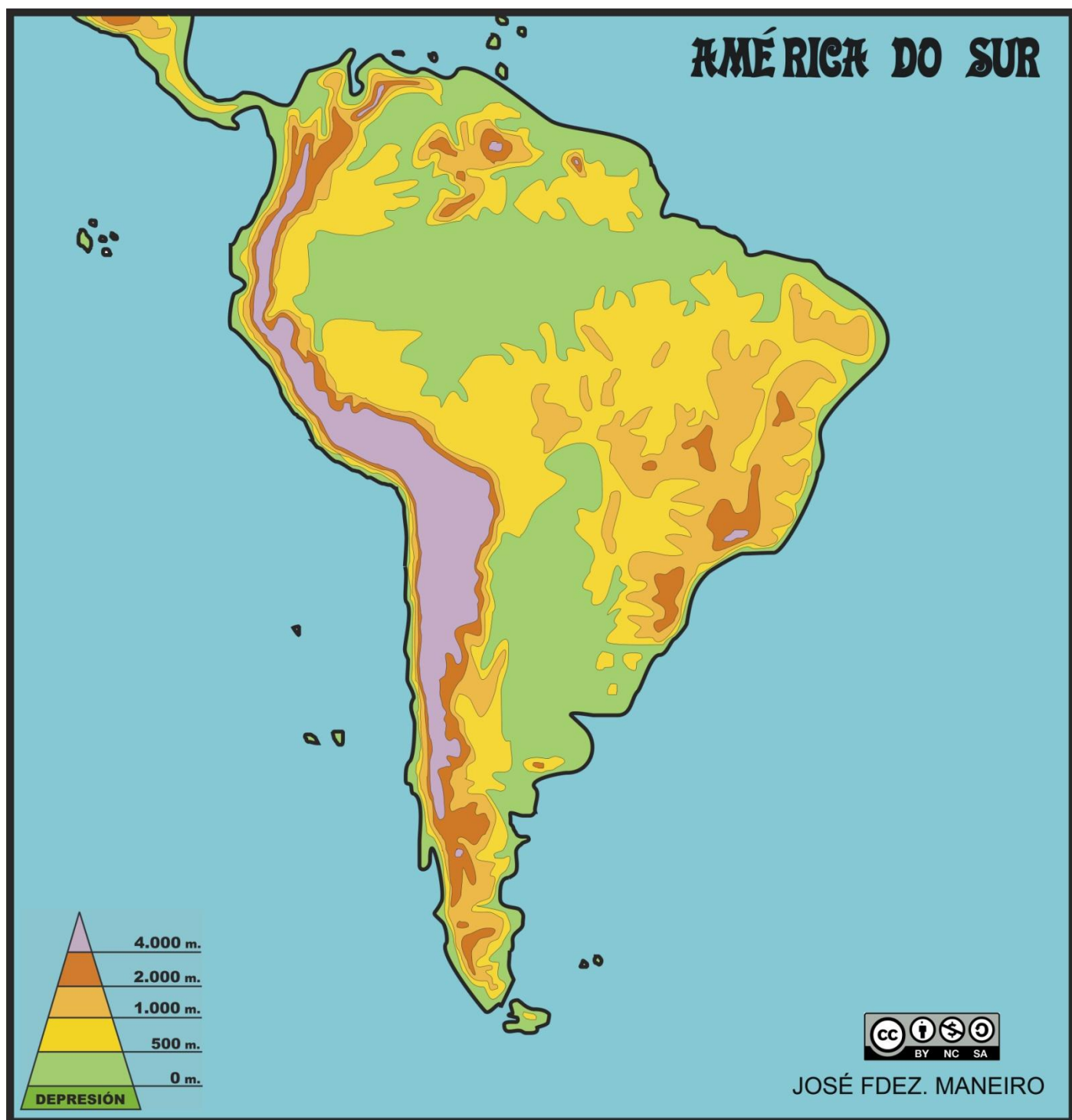
# Relieve



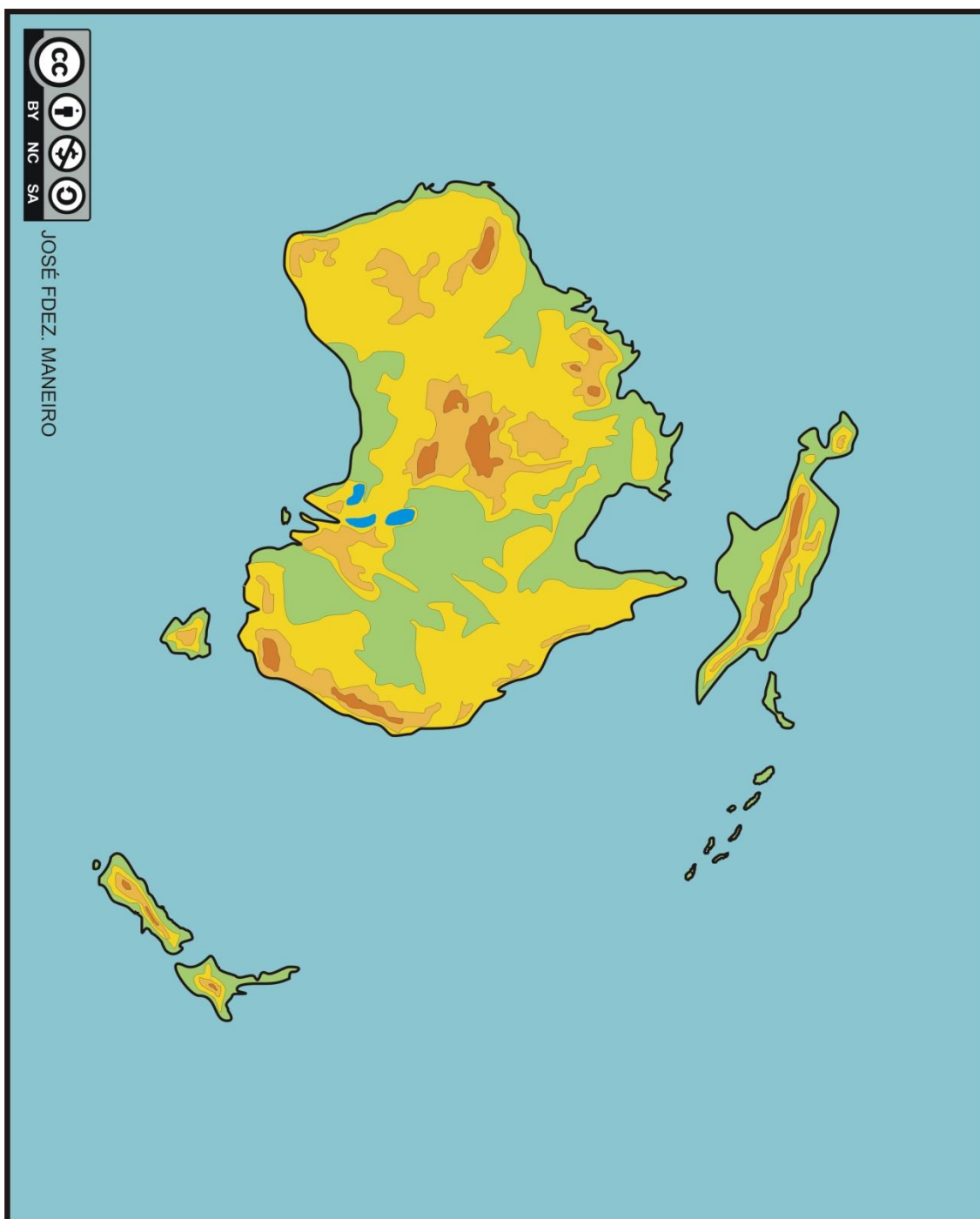












No seguinte mapamundi localiza:

- **Grandes unidades do relevo continental:**
  - **América do N:** ▲ Mckinley ( 6.194 m )
    - Montañas Rochosas.
    - Apalaches
    - Grandes Chairas
  - **América do S:** ▲ Acongagua ( 6.959 m )
    - Andes
    - Cunca do Amazonas
  - **Europa:** ▲ Elbrus ( 5633 m ) – ▲ Mont Blanc ( 4.810 m )
    - Alpes
    - Gran Chaira Europea
    - Urais
    - Cáucaso
  - **Asia:** ▲ Everst ( 8.848 m )
    - Siberia
    - Deserto do Gobi
    - Meseta do Tíbet
    - Himalaia
  - **África:** ▲ Kilimanxaro ( 5.895 m )
    - Atlas
    - Deserto do Sahara
    - Cunca do Congo
  - **Oceanía:** ▲ Puncak Jaya ( 5.030 m ) – ▲ Kociusko ( 2.230 m )
    - Gran Cordilleira Divisoria
- Os océanos
- Mares:
  - Mar de Bering
  - Mar Caribe
  - Mediterráneo
  - Mar Negro
  - Mar Caspio
  - Mar Vermello
  - Mar da China
  - Mar do Coral
- Golfos e baías:
  - Baía de Hudson
  - Golfo de Alaska
  - Golfo de México
  - Golfo de Guinea
  - Golfo Pérsico
  - Golfo de Bengala
  - Gran Baía Australiana

