

## Exercicios de Apoio

### **Exercicio nº1.-**

Estuda e representa a función:  $y = \frac{x-1}{2x+1}$

### **Exercicio nº2.-**

Constrúe a curva  $y = \frac{x^2-4}{x-1}$

### **Exercicio nº3.-**

Representa a función  $y = e^{-x^2}$

### **Exercicio nº4.-**

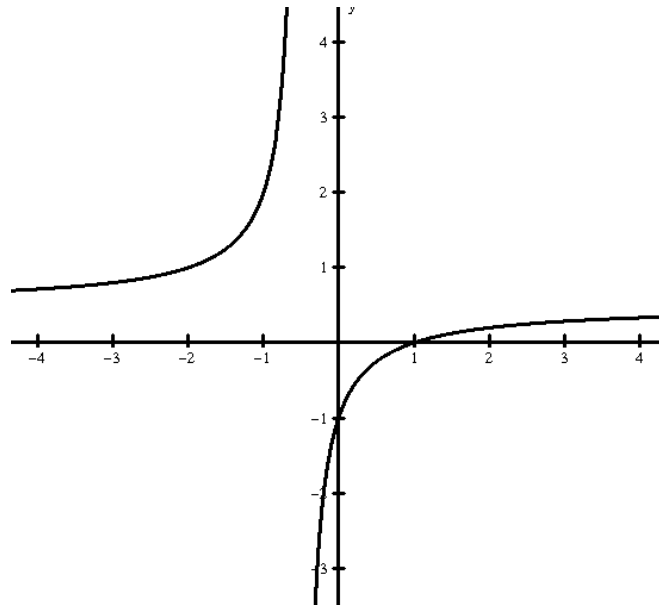
Representa a función  $y = \frac{x^2+1}{x}$

### **Exercicio nº5.-**

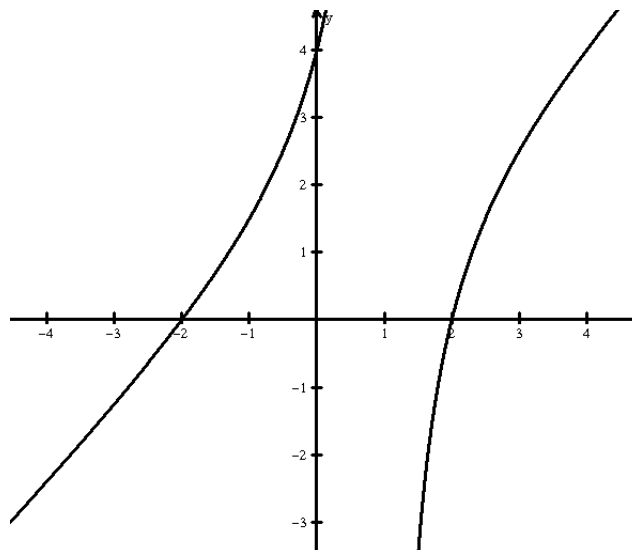
Representa a función  $y = \frac{x}{4-x^2}$

# Solucións

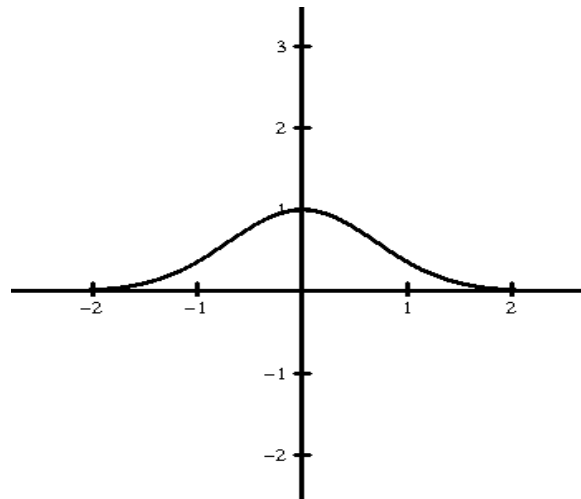
## Exercicio nº1.-



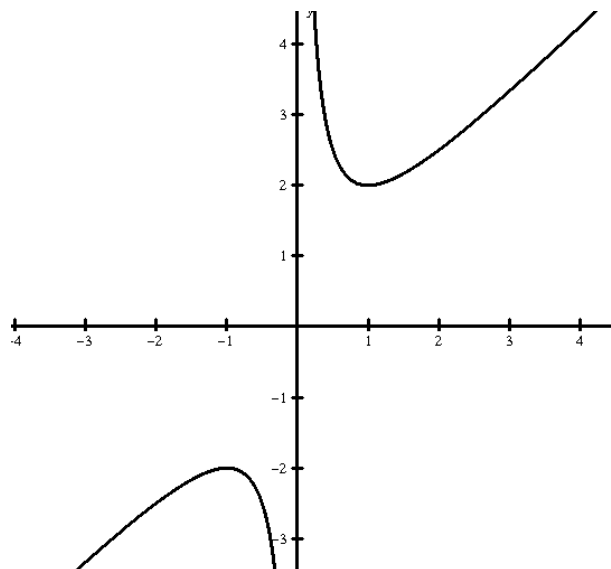
## Exercicio nº2.-



**Exercicio nº3.-**



**Exercicio nº4.-**



**Exercicio nº5.-**

