

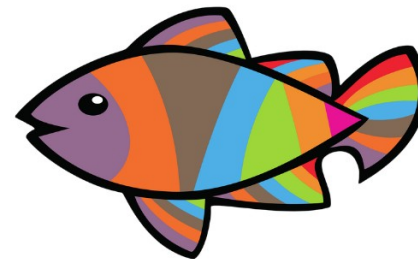
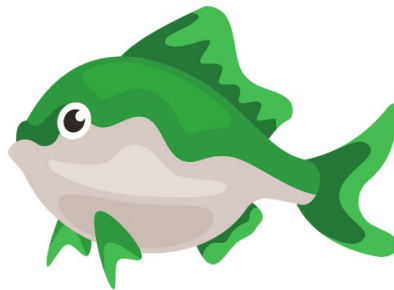
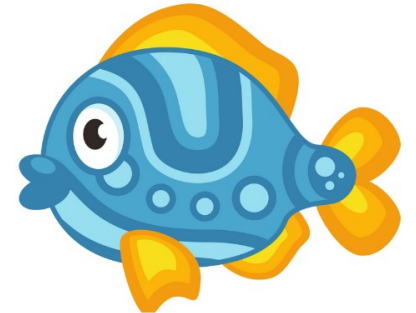
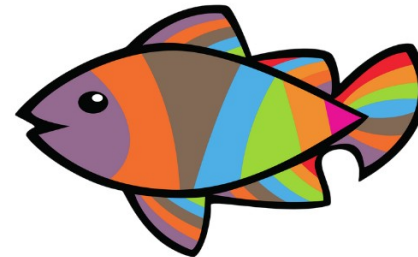
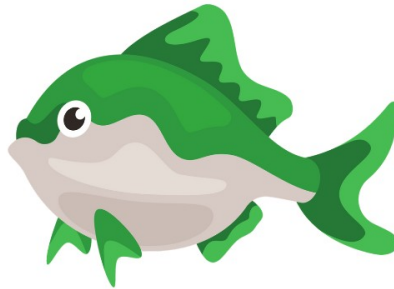
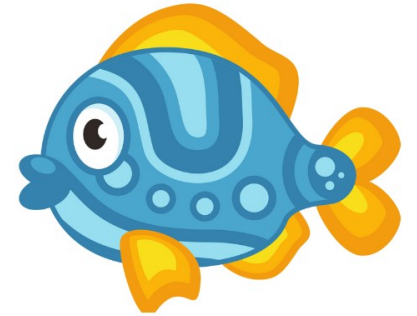
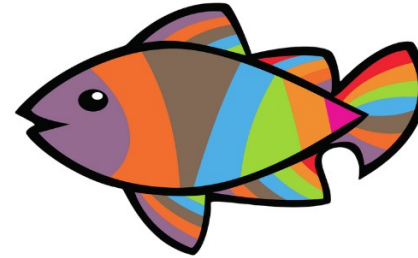
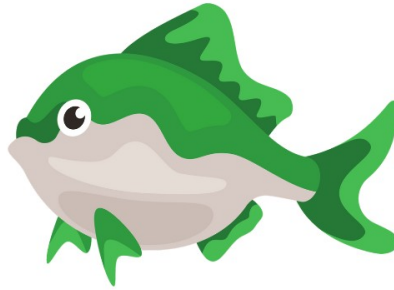
3.5. Ortografía

Pescando en el mar de las letras.

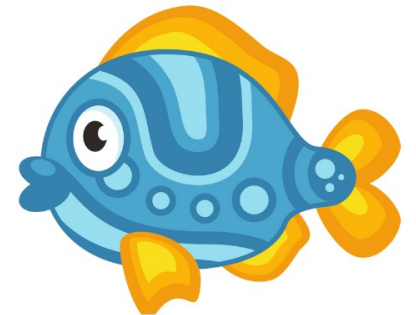
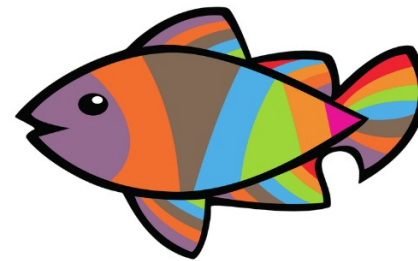
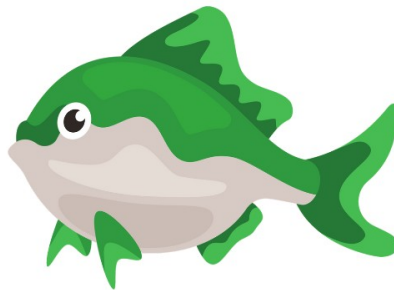
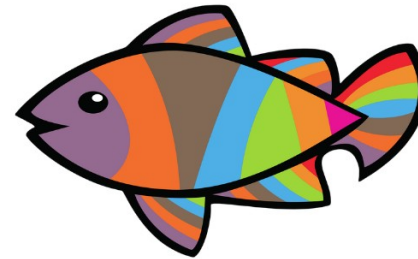
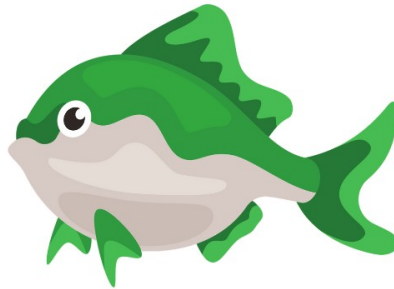
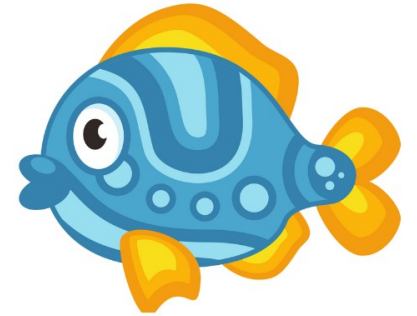
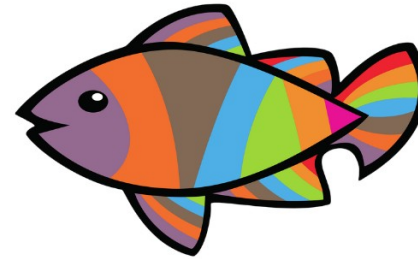
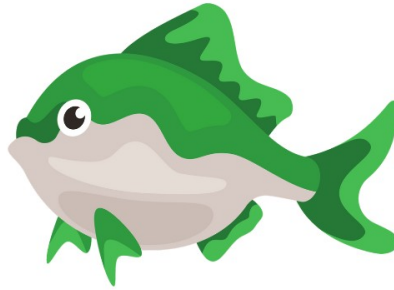
Cada pez de colores llevará pegado en su parte de atrás un pez en blanco y negro. Esta parte se colocará mirando hacia abajo. Entre ambas capas irá colocado el imán o ficha metálica.

Las cañas de pescar se pueden hacer con el material que cada uno considere y llevarán un imán en el extremo, para poder pescar los peces.

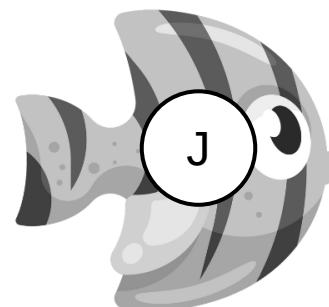
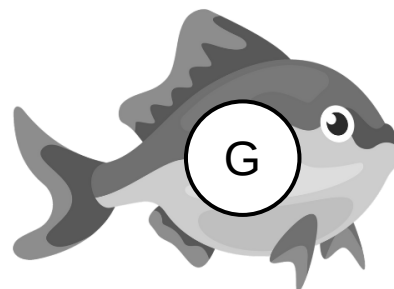
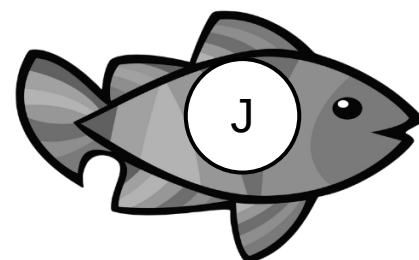
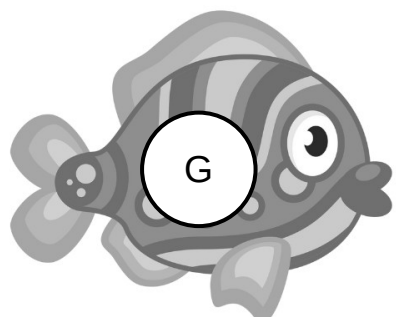
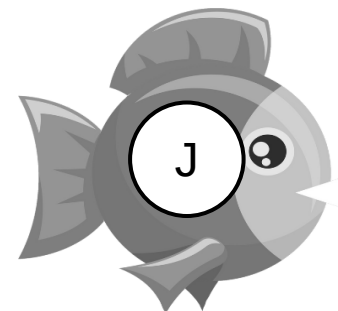
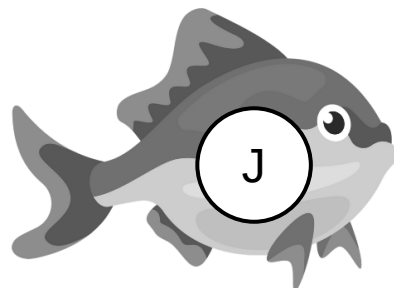
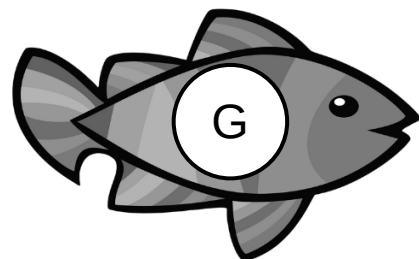
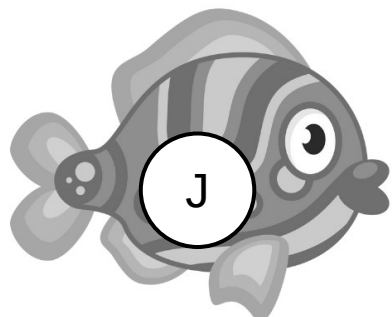
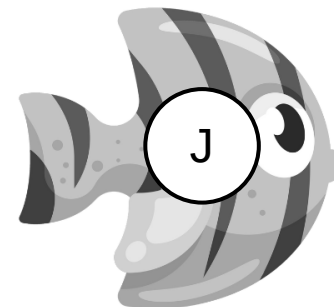
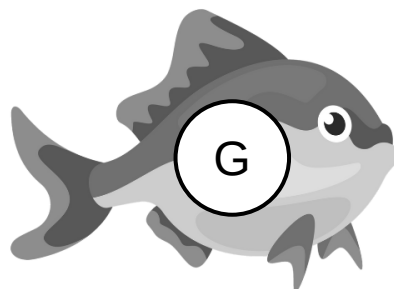
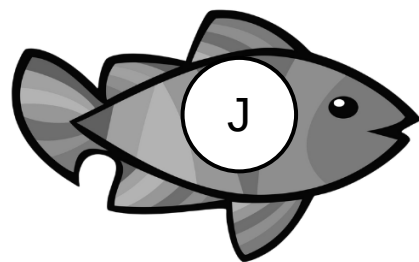
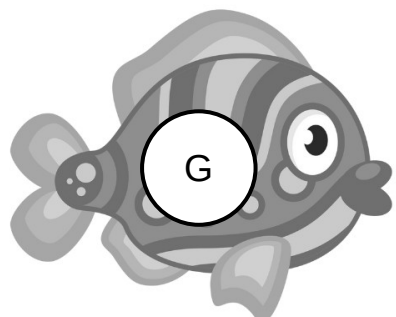
PECES (PARTE DE ARRIBA)



PECES (PARTE SUPERIOR)



PECES (PARTE INFERIOR)



PALABRAS INCOMPLETAS



DIBU_O	_ASTAR	_ATO	_ARRÓN	_EFA	AMI_O
_ARDÍN	_OVEN	_ALERAS	_UICIO	_RANATE	_ANADO
_UBILADA	_INETE	_APONÉS	_AMBERRO	_AR_ANTA	_EQUE
_IRASOL	TI_ERAS	_ESTO	_ERÁRQUICO	RO_IZA	BURBU_A
_EROGLÍFICO	IMA_INACIÓN	_UITARRA	RE_UERO	PERSE_UIR	A_ITAR

PALABRAS INCOMPLETAS



DIBUJO	GASTAR	GATO	JARRÓN	JEFA	AMIGO
JARDÍN	JOVEN	GALERAS	JUICIO	GRANATE	GANADO
JUBILADA	JINETE	JAPONÉS	GAMBERRO	GARGANTA	JEQUE
GIRASOL	TIJERAS	GESTO	JERÁRQUICO	ROJIZA	BURBUJA
JEROGLÍFICO	IMAGINACIÓN	GUIARRA	REGUERO	PERSEGUIR	AGITAR

