

# *Nocturno, Ricercar e Variacións. Op. 44*

*para violoncelo e piano*

*A Coruña, 26 de Outubro-26 de Novembro de 1989*

Duración: 15 minutos

*Paulino Pereiro*



# Nocturno, Ricercar e Variações. Op. 44

## I. Nocturno

Paulino Pereiro

♩ = 54

Violoncelo

Piano

*pp*

*pp*

*cresc. molto*

*pp*

*cresc. molto*

*pp*

*cresc. molto*

*f*

*cresc. molto*

*f*

13

13

*p*

*cresc.*

*f*

16

16

*p*

*cresc.*

*f*

19

19

*cresc. molto*

*f*

22

*mf*

22

*mf*

25

*cresc. molto*

25

*cresc. molto*

28

*mp*

28

*p*

*Red.* \*

*Red.* \*

30

30

*Red.* \* *Red.* \* *Red.* \* *Red.* \*

32

*cresc.*

*cresc.*

*Red.* \* *Red.* \* *Red.* \* *Red.* \* *Red.* \*

34

*mf* *rit.* *A tempo* *mf*

*rit.* *A tempo* *mf*

37

37

40

*f*

*dim.* *mp*

40

*f*

*dim.* *p*

40

43

43





55 *con sordina*

arco *p*

55

57

*Red.*

58

*mf*

58

60

*Red.*

61

*p*

61

63

64

*pizz.*

64

67

*arco p*

67

*p*

70

*senza sordina f*

*accel.*

70

*cresc. molto*

*f*

*accel.*

*8va*

*Red.*

*\**

73

8va

73

Red.

gliss.

rit.

Red.

75

75

A tempo

p

A tempo

p

Red.

78

8va

78

cresc.

5

cresc.

81

*p subito*

81

*p*

8va

Red.

\*

Red.

\*

84

*p*

*mf*

84

*mf*

3

3

3

Red.

\*

Red.

\*

Red.

\*

87

*cresc.*

87

*cresc.*

3

3

3

3

Red.

\*

Red.

\*

Red.

\*

90

*f*

90

*f*

8vb

93

93

8vb

96

96

Measures 99-101 of a musical score. The score is written for a grand staff (treble and bass clefs). The key signature has one flat (B-flat). Measure 99 starts with a *pp* (pianissimo) dynamic. The right hand features a melodic line with a trill in measure 100. The left hand plays a continuous triplet pattern. A *Red.* (Reduction) symbol and a *\* simile* (simile) symbol are present below the left hand. The system concludes with a crescendo hairpin.

Measures 102-104 of a musical score. The score is written for a grand staff. Measure 102 begins with a *mf* (mezzo-forte) dynamic. The right hand has a melodic line with a trill in measure 103. The left hand continues with triplet patterns. A crescendo hairpin is shown over measures 103 and 104.

Measures 105-107 of a musical score. The score is written for a grand staff. Measure 105 starts with a *f* (forte) dynamic. The right hand features a melodic line with a trill in measure 106. The left hand plays triplet patterns. A crescendo hairpin is shown over measures 105 and 106.

108

108

110

110

113

*pp*

113

*pp*

117

*cresc. molto* *pp*

117

*cresc. molto* *pp*

121

*cresc. molto* *f*

121

*cresc. molto* *f*

125

*p*

125

*p* *pp*

A Coruña, 26 de Outubro- 2 de Novembro de 1989

Duración: 7 min. 30 seg.



# II. Ricercar

1  $\text{♩} = 100$

Violoncello

*f sempre staccato*

Piano

*f sempre staccato*

5

5

9

*p cresc.*

9

*p cresc.*

13

*mf*

13

*mf*

17

*dim.*

*mf*

17

*dim.*

*mf*

21

*p*

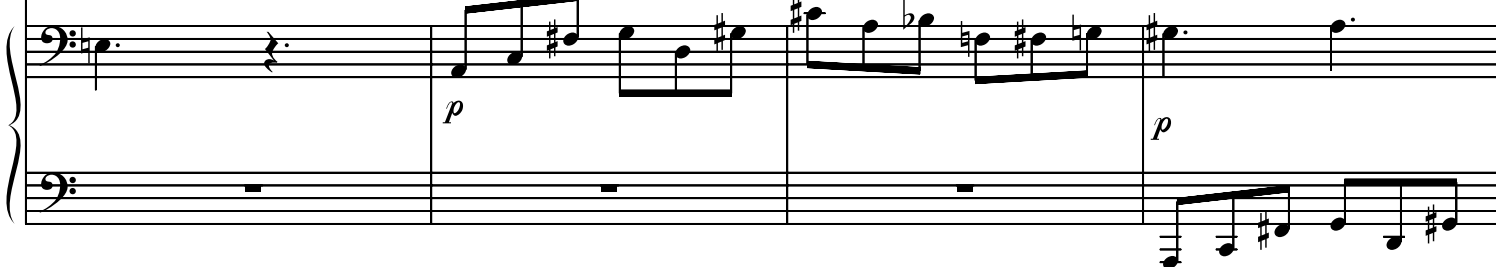
21

*p*

25



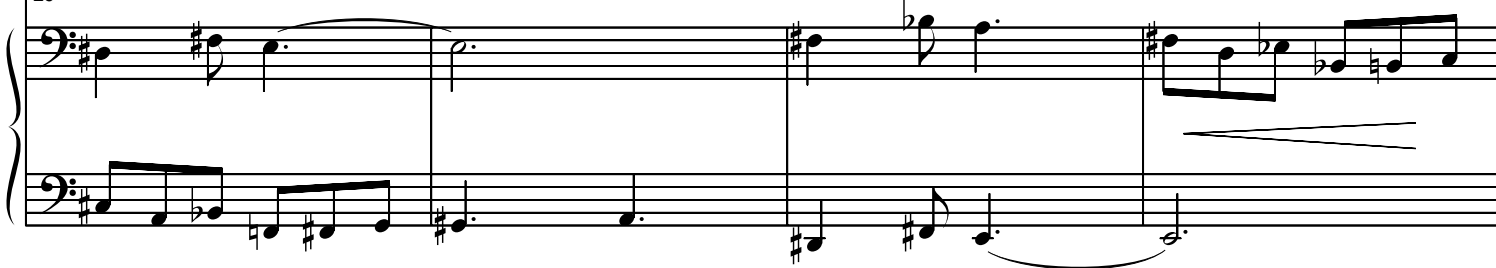
25



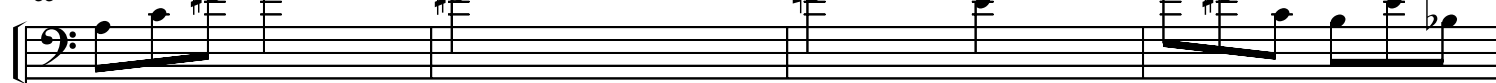
29



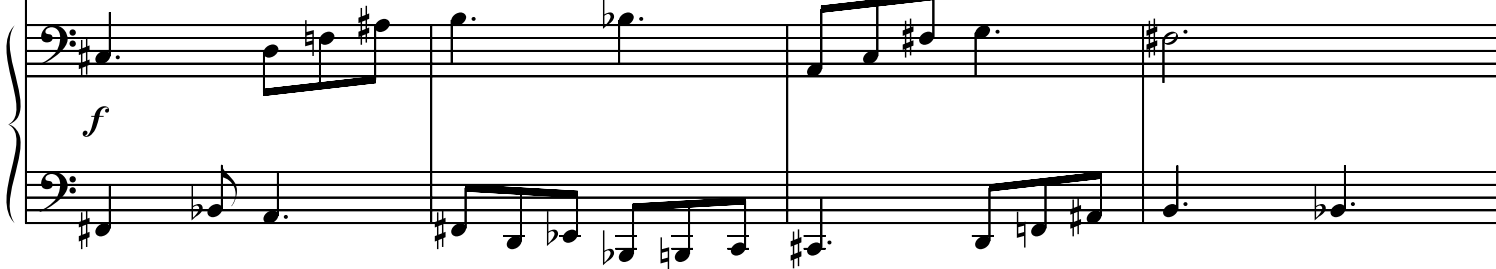
29



33



33



37

37

41

41

*p* *cresc.*

45

45



61

*p* *cresc.*

61

*p* *cresc.*

65

*f*

65

*f*

69

*f*

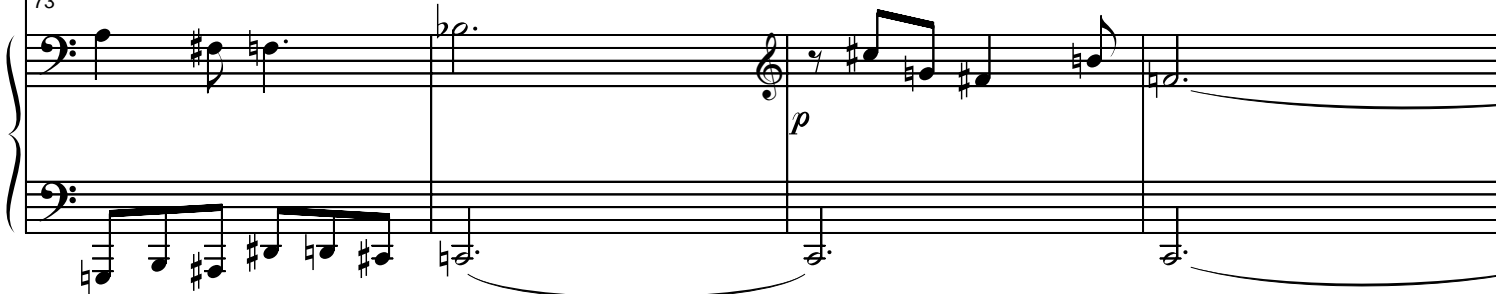
69

*f*

73



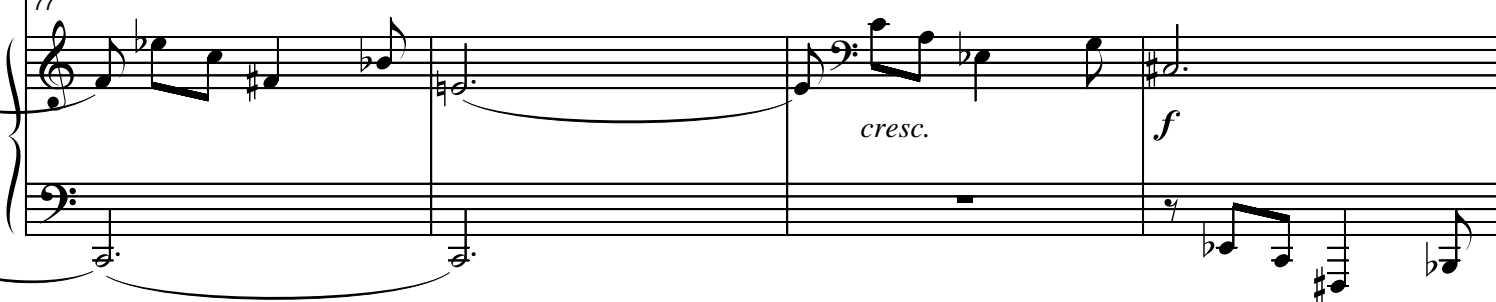
73



77



77



81



81



85

85

89

89

93

*dim.*

93

*dim.*



97

*p* *rit.*

*mp* *rit.*

100

*molto rit.*

*molto rit.*

*led.*

104



A Coruña, 6-14 de Novembro de 1989  
Duración: 2 min. 40 seg.

# III. Variacións

$\text{♩} = 60$

Violoncelo

1

*f*

Piano

1

*f*

Red.

\*

Red.

\*

3

3

8va

*mf*

Red.

\*

5

5

*p*

*p*

7 *f* *tr* *tr* 3 3 *tr* 3 3 *tr*

7 *f*

9 *mf* *tr* *tr* 3 3 3 3 3 3 3 3

9 *p* 3 3 3 3 3 3 3 3

11 *mf* 11

11

13

*p*

13

*p*

Red. \* Red. \* Red.

15

15

Red. \* Red. \* Red.

17

*mf cresc.*

*f*

17

*f*

19

19

21

21

*p*

*p*

23

23

25

25

26

*f*

*tr*

3

27

27

*f*

*8va*

29

29

*pizz.*

*f*

3

32

Measures 32-33 of a musical score. The system consists of a grand staff with a bass clef on the left and a treble clef on the right. The bass staff contains whole rests for both measures. The treble staff begins at measure 32 with a series of eighth and sixteenth notes, including a triplet in measure 33. The key signature has one flat (B-flat).

34

Measures 34-35 of a musical score. The system consists of a grand staff with a bass clef on the left and a treble clef on the right. The bass staff contains whole rests for both measures. The treble staff begins at measure 34 with a series of eighth and sixteenth notes, including a triplet in measure 35. The key signature has one flat (B-flat).

36

Measures 36-37 of a musical score. The system consists of a grand staff with a bass clef on the left and a treble clef on the right. The bass staff contains whole rests for both measures. The treble staff begins at measure 36 with a series of eighth and sixteenth notes, including a triplet in measure 37. The key signature has one flat (B-flat).

*con sordina*  
*arco*  
*p*  
*tr*  
*tr*  
*dim.*  
*pp*

38

38

*p*

40

40

42

42



44

44

47

47

49

*f*

49

*p*

*cresc.*

51

51

*mf*

*dim.*

53

53

*p*

3

*Sub*

55

55

*mf*

3

3

57

57

*mf*

8vb

tr<sup>b</sup>

59

59

*p*

*mf*

tr<sup>b</sup>

61

61

*mf*

63 *senza sordina*

*f*

8<sup>va</sup>

63

64

65

65

65

66

67

*p*

67

*p*

67

68



75

75

*p*

*Ped.*

\*

77

77

*f*

*gliss.*

*p*

79

79

*p*

*8va*

*p*

*Ped.*

\*

A Coruña, 17-26 de Novembro de 1989

Duración: 5 minutos

