

***Prelúdio e Fuga a tres.
Op. 41***

Para piano

Composta en A Coruña, entre o 19 de Xuño de 1988 e o 11 de Febreiro de 1989

Paulino Pereiro

Prelúdio e Fuga a tres. Op. 41

A Albert Nieto

Prelúdio

Paulino Pereira

1 $\text{♩} = 100$

Piano *mf* Tempo giusto

5 *mf*

9

13 *mf*

17 *cresc.*

21 *mf*

25 *p*

29

33 *tr* *mf*

37

41

45

49

53

57

ff

8va

61

attacca

Fuga

1 $\bullet = 92$

Piano *mf* *Tempo giusto*

6

Example 6

16

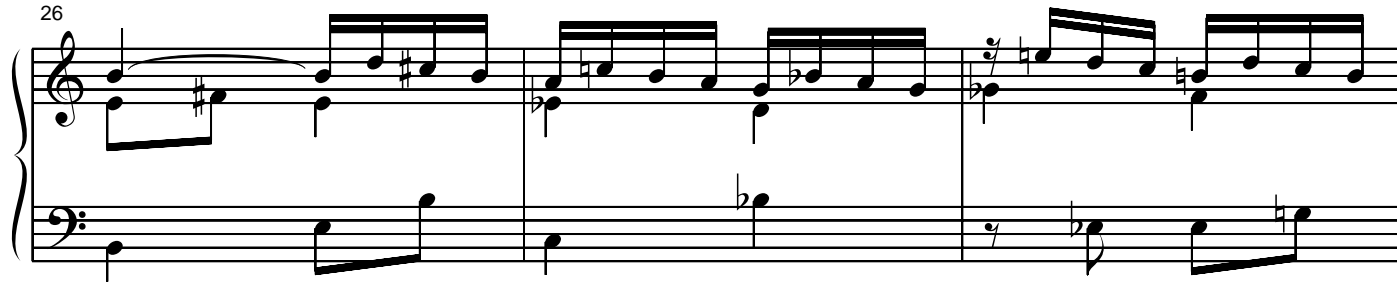
Musical score for 'The Rose Tree' (Measures 16-20). The score is written for two staves (treble and bass clef) with a grand staff bracket. The key signature is one flat (B-flat major/D minor). The melody in the treble staff features a series of eighth and sixteenth notes, often beamed together, with a final measure containing a half note. The bass staff provides a harmonic accompaniment with eighth and sixteenth notes, including a triplet in measure 17 and a final measure with a half note. The piece concludes with a double bar line.

21

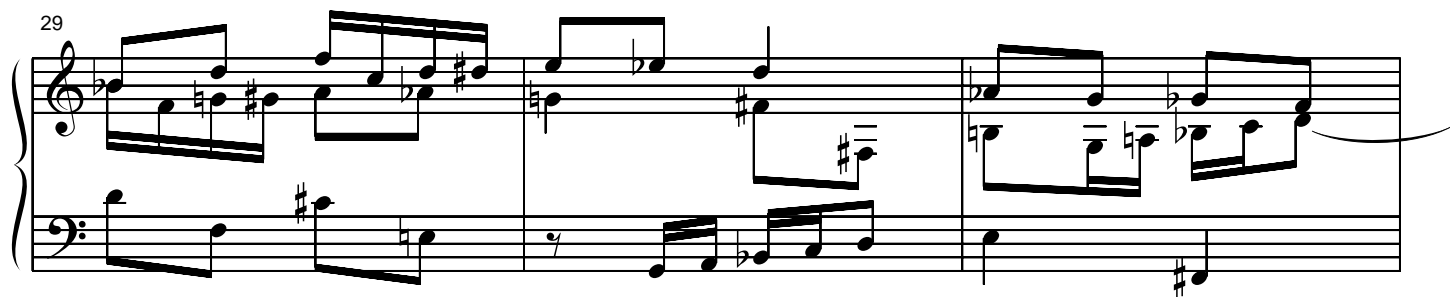
This musical score segment contains measures 21 through 24. The notation is as follows:

- Measure 21:** Treble clef has a quarter note G4, a quarter note F#4, and a quarter rest. Bass clef has a quarter note G3, a quarter note F#3, and a quarter note E3.
- Measure 22:** Treble clef has a quarter note G4, a quarter note F#4, and a quarter note E4. Bass clef has a quarter note G3, a quarter note F#3, and a quarter note E3.
- Measure 23:** Treble clef has a quarter note G4, a quarter note F#4, and a quarter note E4. Bass clef has a quarter note G3, a quarter note F#3, and a quarter note E3.
- Measure 24:** Treble clef has a quarter note G4, a quarter note F#4, and a quarter note E4. Bass clef has a quarter note G3, a quarter note F#3, and a quarter note E3.

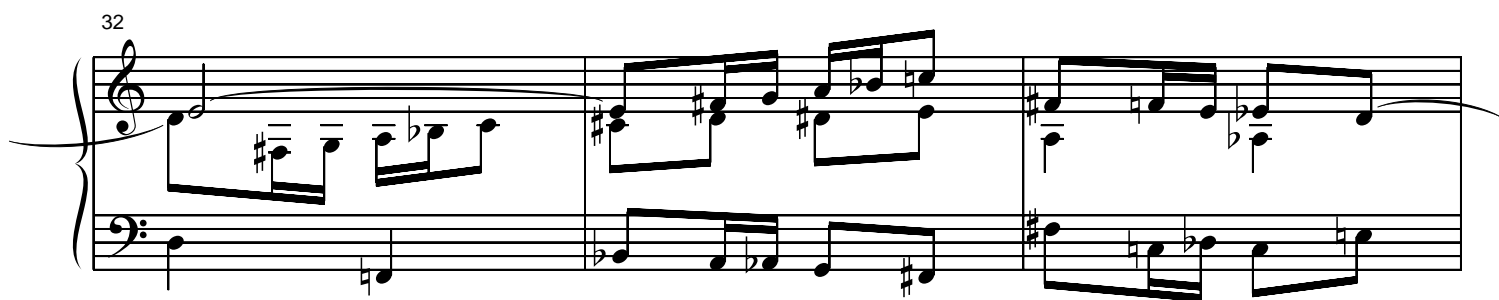
26



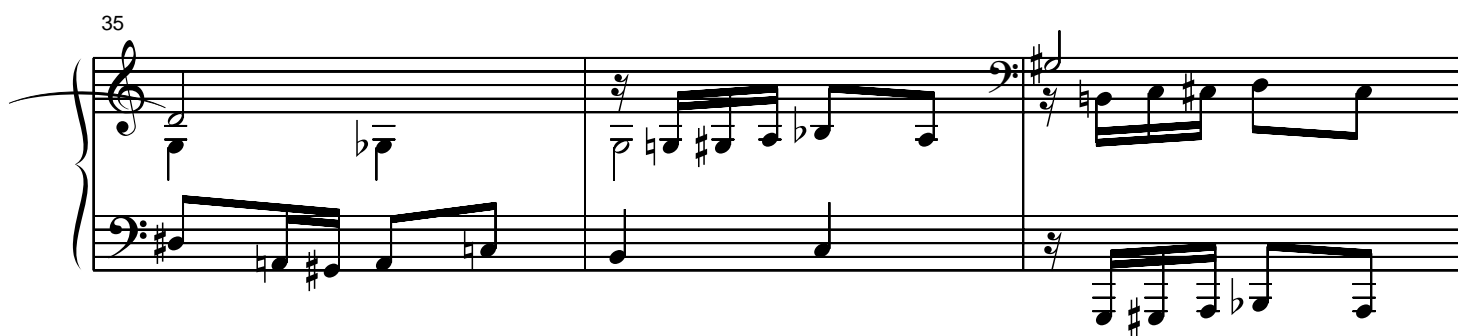
29



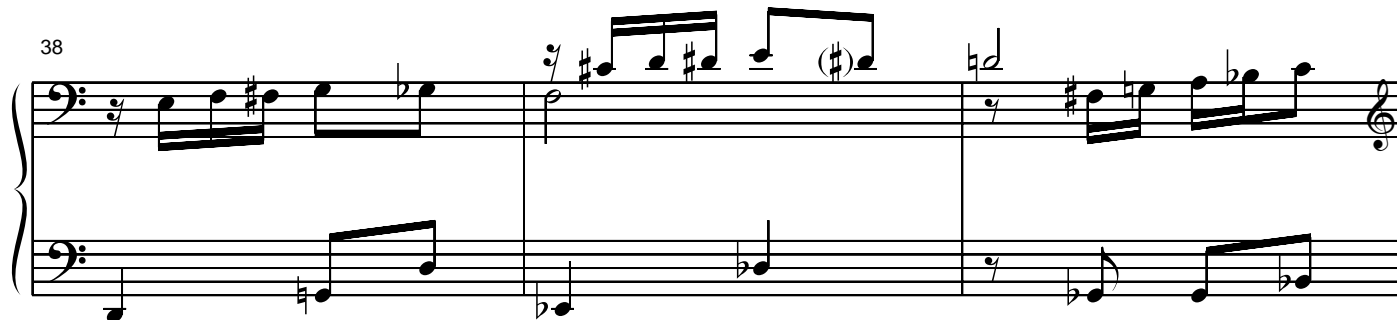
32



35



38



41

Measures 41-43 of a musical score. Measure 41: Treble clef has a half note G#4 and a half note A#4; Bass clef has a half note F#3 and a half note G#3. Measure 42: Treble clef has a half note B4 and a half note C5; Bass clef has a half note A#3 and a half note B3. Measure 43: Treble clef has a half note D5 and a half note E5; Bass clef has a half note C#4 and a half note D4. The key signature has one sharp (F#).

44

Measures 44-46 of a musical score. Measure 44: Treble clef has a half note F#4 and a half note G#4; Bass clef has a half note E#3 and a half note F#3. Measure 45: Treble clef has a half note A#4 and a half note B4; Bass clef has a half note G#3 and a half note A3. Measure 46: Treble clef has a half note C5 and a half note D5; Bass clef has a half note B3 and a half note C4. The key signature has one sharp (F#).

47

Measures 47-49 of a musical score. Measure 47: Treble clef has a half note E#4 and a half note F#4; Bass clef has a half note D#3 and a half note E3. Measure 48: Treble clef has a half note G#4 and a half note A#4; Bass clef has a half note F#3 and a half note G3. Measure 49: Treble clef has a half note B4 and a half note C5; Bass clef has a half note A#3 and a half note B3. The key signature has one sharp (F#).

50

Measures 50-52 of a musical score. Measure 50: Treble clef has a half note D5 and a half note E5; Bass clef has a half note C#4 and a half note D4. Measure 51: Treble clef has a half note F#5 and a half note G#5; Bass clef has a half note E#4 and a half note F#4. Measure 52: Treble clef has a half note A#5 and a half note B5; Bass clef has a half note G#4 and a half note A4. The key signature has one sharp (F#).

53

Measures 53-55 of a musical score. Measure 53: Treble clef has a half note C6 and a half note D6; Bass clef has a half note F#4 and a half note G#4. Measure 54: Treble clef has a half note E6 and a half note F#6; Bass clef has a half note A#4 and a half note B4. Measure 55: Treble clef has a half note G#6 and a half note A#6; Bass clef has a half note B4 and a half note C5. The key signature has one sharp (F#).

56

59

62

65

68

71

Measures 71-73 of a musical score. The key signature has one flat (B-flat). Measure 71 features a treble staff with eighth and quarter notes and a bass staff with a half note and eighth notes. Measure 72 includes a *cresc.* marking with a slur over the bass staff. Measure 73 continues the melodic and harmonic development.

74

Measures 74-76 of a musical score. Measure 74 shows a treble staff with quarter and eighth notes and a bass staff with a half note and eighth notes. Measure 75 features a slur over the bass staff. Measure 76 continues the melodic and harmonic development.

77

Measures 77-79 of a musical score. Measure 77 features a treble staff with eighth and quarter notes and a bass staff with a half note and eighth notes. Measure 78 includes a *mf* marking. Measure 79 continues the melodic and harmonic development.

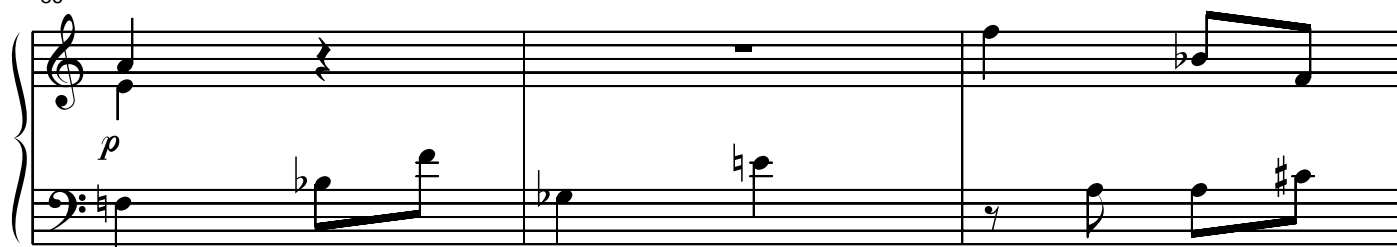
80

Measures 80-82 of a musical score. Measure 80 features a treble staff with eighth and quarter notes and a bass staff with a half note and eighth notes. Measure 81 continues the melodic and harmonic development. Measure 82 features a treble staff with eighth and quarter notes and a bass staff with a half note and eighth notes.

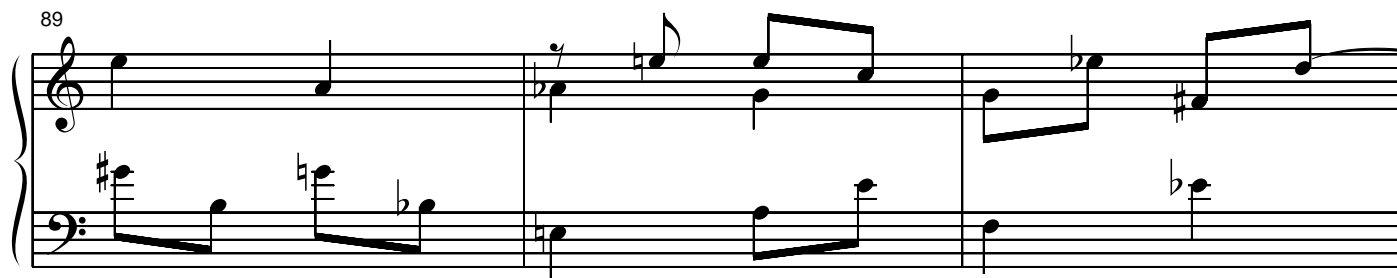
83

Measures 83-85 of a musical score. Measure 83 features a treble staff with eighth and quarter notes and a bass staff with a half note and eighth notes. Measure 84 continues the melodic and harmonic development. Measure 85 features a treble staff with eighth and quarter notes and a bass staff with a half note and eighth notes.

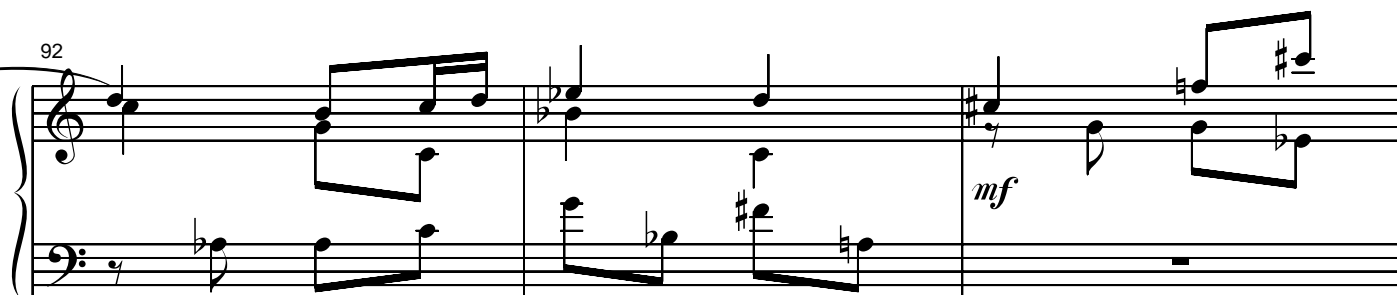
86



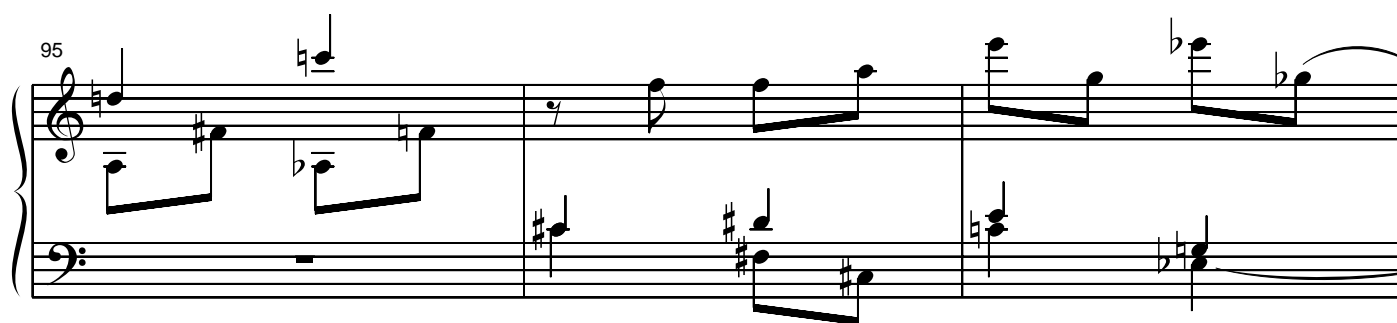
89



92



95



98



101

104

107

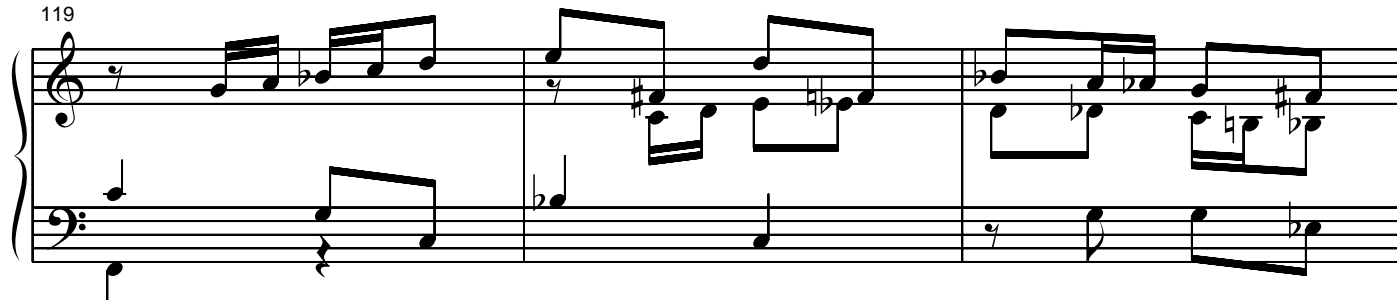
110

113

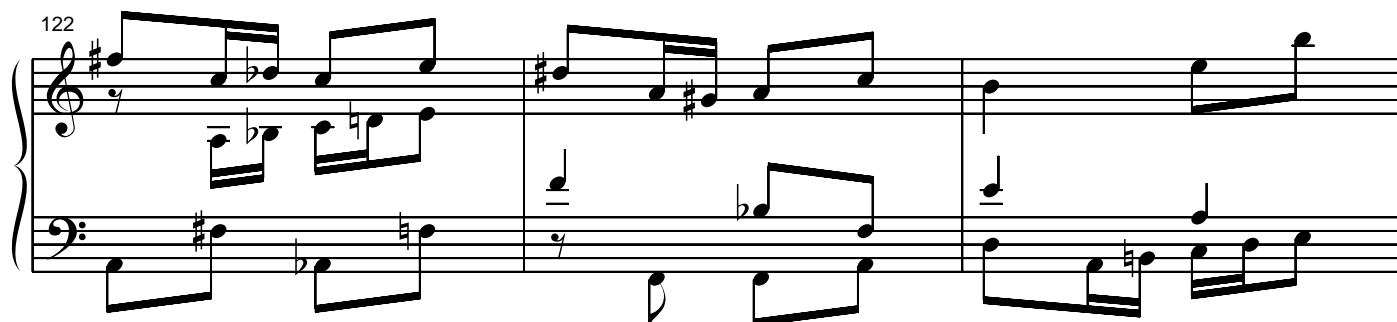
116



119



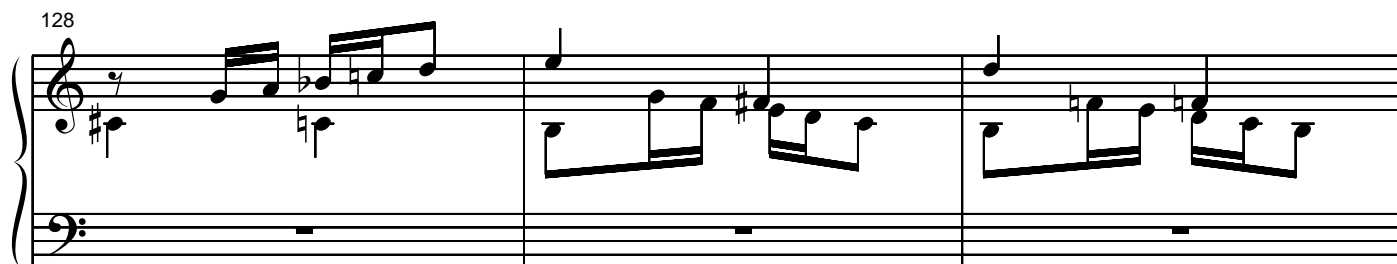
122



125



128



131

p

134

137

140

mf

144

147

p

150

153

f

156

160

163

166

169

molto rit.

172

A Coruña, 1988-1989